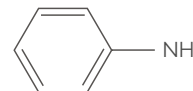


- **Chemical formula:** C₆H₇N
- **CAS No.:** 62-53-3
- **HS No.:** 2921 4100
- **Registration No.:** 01-2119451454-41-0009
- **Appearance:** Aniline is a colourless, yellowish or even light red-brown liquid with a characteristic amine-like odour.



GENERAL CHARACTERISTICS

Parameter	Unit	Requirements
Density at 20 °C	kg/m ³	1020
Boiling point	°C	184.4
Flash point	°C	76
Melting point	°C	-6.2

APPLICATIONS AREA

Aniline is used for **the production of MDI**, for the production of rubber chemicals, dyestuffs, dyestuffs intermediates, pharmaceuticals, and other organic chemicals.

SEGMENTS

- Accelerators for polymers
- Agriculture
- Antioxidans
- Catalysis and Chemicals Processing
- Chemical synthesis
- Dyestuffs, pigments and optical brighteners
- Dyestuffs for foodstuffs
- Food industry and auxiliaries
- Manufacturing of analgetics
- Manufacturing of dyestuffs
- Manufacturing of fibres
- Manufacturing of food dyestuffs
- Manufacturing of leather colorants and dyestuffs
- Manufacturing of pharmaceutical agents
- Manufacturing of pigments
- Manufacturing of plastics
- Manufacturing of textile dyestuffs
- Optical brighteners
- Pesticides
- Polymer auxiliaries

SPECIFICATIONS

Parameter	Unit	Requirements
Aniline	wt. % min.	99.9
Cyclohexylamine	wt. % max.	0.003
Cyclohexanol	wt. % max.	0.01
Hydrocarbons C6	wt. % max.	0.002
Nitrobenzene	wt. % max.	0.0005
Water	wt. % max.	0.1
Crystalization temperature	wt. % max.	-6.3
Colour	Hazen max.	100

SYNONYMS

Aminobenzene
 Aminophen
 Benzenamine
 Phenylamine

HEALTH HAZARD EFFECTS

Excessive inhalation of the vapour or absorption of the liquid through the skin can cause methemoglobinemia cyanosis. Acute poisoning first becomes evident on the lips, ears and nails.

ADR REGULATIONS

UN 1547 ANILINE, 6.1, II, (D/E)

PACKAGING

Rail tank cars
 Road tank cars
 Tank containers